

ANDY

PORTFOLIO

2019

RESEARCH & CHARACTER

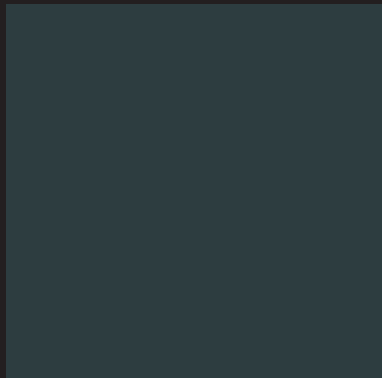


RAFEIRO (SHORT-MOVIE)

A quick look at my last project that premiered in Spring '18. The A-list casting combined with strong visuals created absolute stunning shots.

DIG DEEPER INTO MY CRAFT

Welcome to my portfolio! Get to know the stages of my creative process throughout my work. From research, color scheming, planning, script breakdown, prop aging/patina to set painting and dressing. Essential steps for a smooth transition to the shooting period where magic happens.



TASKS:
PRODUCTION DESIGN

FINAL
LOOK

CHARACTER
&
RESEARCH

BREAKDOWN
&
VISUAL
INSPIRATION



TUNES AKA RAFEIRO

Brave, sharp, persistent, unpredictable. The four characteristics that sum up our main character. He left school early and fights for money. Tries to find balance between the pressure of his father and the love of his life - Clara. Had a short affair with Maria, now pregnant with his child.



CLARA

Clara is fearless and a bit of a rebel. She knows how to defend herself. She puts others in front of her own needs and fights for Tunes, with whom she is deeply in love with. She doesn't like the current situation, but doesn't want to take any steps that would put his the baby at risk.



ZÉ

Always looking for easy money even if it means putting his son's life in danger. He has debts to pay and he spares no expense to save his skin. He is the key to unlock secrets about Rafeiro's past. Zé doesn't like Clara and Tunes being together, too many distractions can jeopardize everything.



MARIA

Likes to be in command of her own destiny but does not want to admit she has never won Tunes's heart. She has a lot of leverage now that she is baring his child and gets a lot of attention. She prefers to live in this fairytale where the three of them will be forever a happy family.

FINAL
LOOK

RESEARCH
&
CHARACTER

BREAKDOWN
&
VISUAL
INSPIRATION

COSTUME I – scenes all scenes

TUNES – VARIOUS LOOKS: SINGLET AND T-SHIRTS, SPORT SHORTS, HAND WRAPS

CLARA – RED CROP TOP, BRA OR BRALETTE, CROPPED JEGGINGS, NECKLACE, ALLSTARS, DENIM JACKET (MANDATORY FOR SCENE 6)

STYLING COLOUR

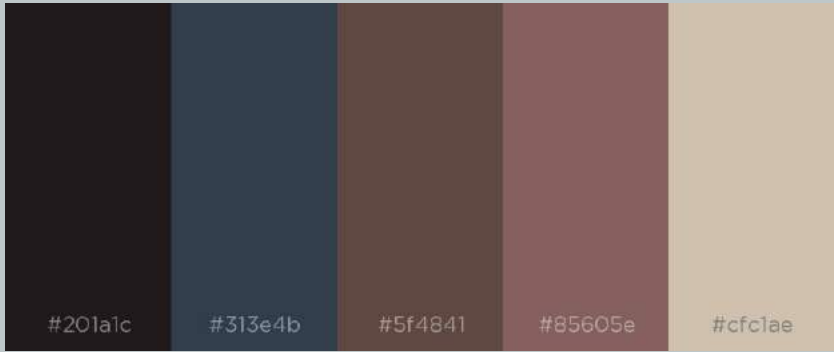
MAKEUP

ZÉ – 90'S SPORT SUIT JACKET, WHITE SINGLET

STYLING

MARIA – TIGHT BLUE DRESS WHITE SKINNY STRAPS, LONG RED NAILS. ORANGE TONED NUDE LIP, EYES WITH EYELINER AND BRIGHT BLUE SHADOW; HAIR WITH KNOT

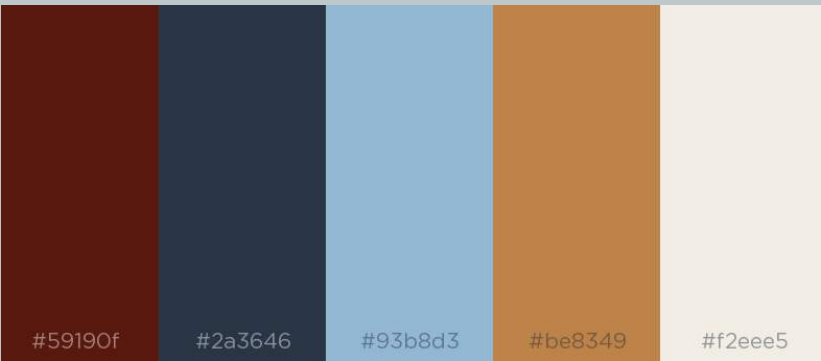
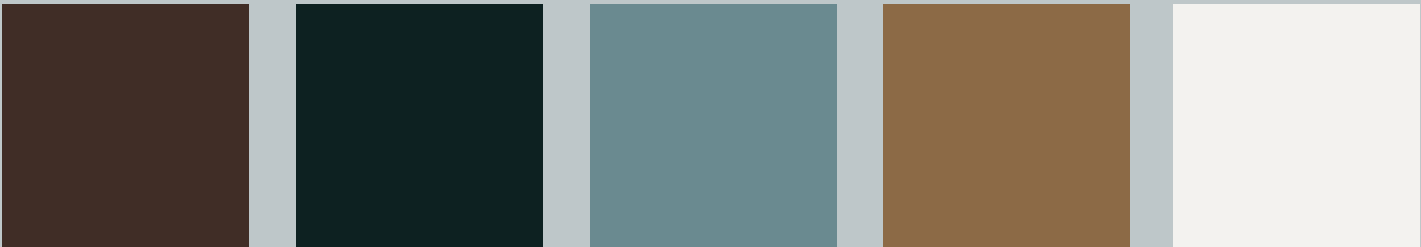
STYLING MAKEUP



UP TOP: frame from RAFEIRO, where Maria confronts Tunes about their relationship. Her fairytale is torn apart.

MIDDLE: the achieved color scheme, after post-production.

DOWNLEFT: the proposed palette for this scene in pre-production process.



UP TOP: frame from RAFEIRO, where Clara awaits the arrival of Tunes to comfort him after the tragedy.

MIDDLE: the achieved color scheme, after post-production.

DOWN RIGHT: the proposed palette for this scene in pre-production process.

SCRIPT BREAKDOWN

After careful reading and outlining the script, I put together, in one page, the scene breakdown, organized having the characters in mind, their wardrobe, makeup and props.

Because my work is very visual and needs to communicate quickly across everyone on the team, I thought in pre-production inspirational pictures and add the scene color schemes for easier consultation during shooting.



SCENE Nº	SCENE	SCENE DESCRIPTION	CHARACTERS	OBJECTS PER CHARACTER	WARDROBE	MAKEUP OBSERVATIONS
Nº	CENA	DESCRIÇÃO	PERSONAGENS	OBJECTOS	GUARDA ROUPA	INDICAÇÕES MAKEUP
1 pp 1-2	EXT. BAIRRO – DIA (COMPLEXO SOCIAL)	TUNES treina com ZÉ com almofadas de boxe. CLARA observa-o da varanda fumando. MARIA aproxima-se de TUNES e chateiam-se. ZÉ pressiona TUNES. MARIA confronta CLARA. CLARA apaga o cigarro.	TUNES CLARA ZÉ MARIA FIGURANTES	CORDA GARRAFA DE ÁGUA CIGARROS+ISQUEIRO ALMOFADAS BOXE desgastada	TUNES (está suado de treinar, roupa e corpo; ligas estão sujas castanho) CLARA (ênfase na magreza dela na barriga e lateral crop top) ZÉ (singlet branca suja amarelada de desgaste) MARIA (barriga falsa grávida)	TUNES (manchas de agua na roupa em pontos estratégicos; agua+óleo Johnson para suor cara e corpo. Tez avermelhada do esforço) CLARA (ênfase no aspeto jovem e celestial) ZÉ (suado do esforço) MARIA (ênfase no esforço que faz para ser bonita; maquilhagem pindérica)

TUNES
GUARDA ROUPA

Camisola caveada verde tropa/cinzanta clara de algodão, calção fato de treino cinza, ligas (sujas de castanho)

MAKEUP

Ar cansado: olheiras salientes e olhos encovados
Suado na roupa cara e corpo
Rosáceas realçadas por causa do esforço
Bronze nas maçãs do rosto e pontos altos

CLARA
GUARDA ROUPA

crop top bordeaux, soutien branco, jegging ganga azul escura, colar gargantilha rosa veludo, e allstarts azuis;

MAKEUP

Natural / no-makeup look
Aspeto jovem e celestial: lábio morango cetim, apontamento de sardas, blush natural, beach shades, rimel disfarçado, tez iluminada, cabelo solto ondulado



ZÉ
GUARDA ROUPA

Fato de treino anos 90 verde com risca vermelha, fio colar
Singlet suja de amarelo de ser velha.

MAKEUP

Suado do esforço, barba 1-2 dias por fazer, rugas salientes e olheiras, cicatriz de cera ou collodium e/ou falha na sobrançelha.



MARIA
GUARDA ROUPA

Vestido azul 1* claro justo de alças finas e com padrão, soutien vermelho, sapato plataforma ou sandália romana, argolas grandes (brincos), pulseiras, unhas compridas vermelhas
*há dois vestidos iguais

MAKEUP

Set de unhas falsas compridas vermelho vivo formato quadrado
Lábios pintados castanho nude laranja; olhos com eyeliner e sombra colorida azulada; cabelo apanhado de lado com gancho colorido;



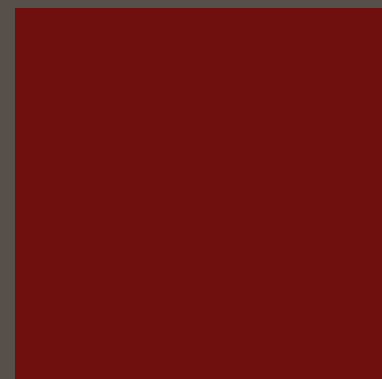
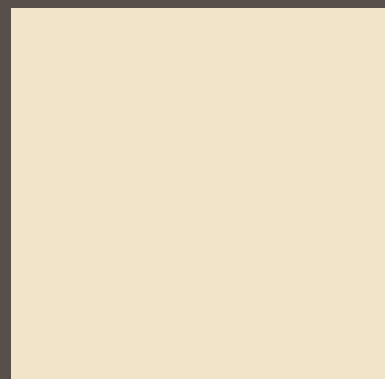
ART DIRECTION



THE FEAR INSTALLATION (SHORT-MOVIE)

The crown jewel of my work! At least the one I still look back with nostalgia and gratitude. It was such a big project and it gave us fruits that we could only hope for but have never imagined.

Working with these three brilliant actors was the cherry on top of the cake!

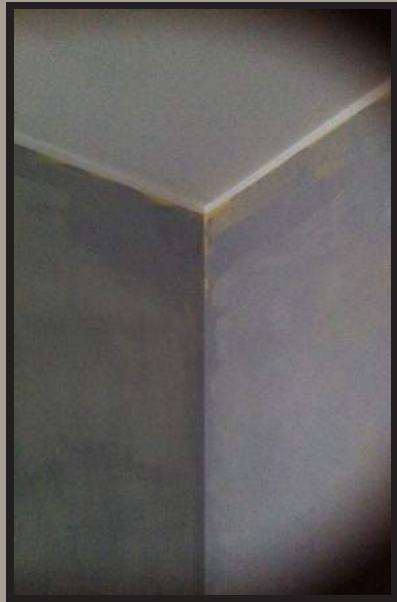




LEFT PAGE ACTORS: Cândido Ferreira, Nuno Janeiro and Margarida Moreira | PICS. by me | UP POSTER by Daniela Cruz | LEFT UP: 1st opening shot; DOWN: closing shot | Directed by: Ricardo Leite.

A INSTALAÇÃO DO MEDO
- THE FEAR INSTALLATION -
8,0 IMDB RATING

TASKS:
SET PAINTING | ART DIRECTION



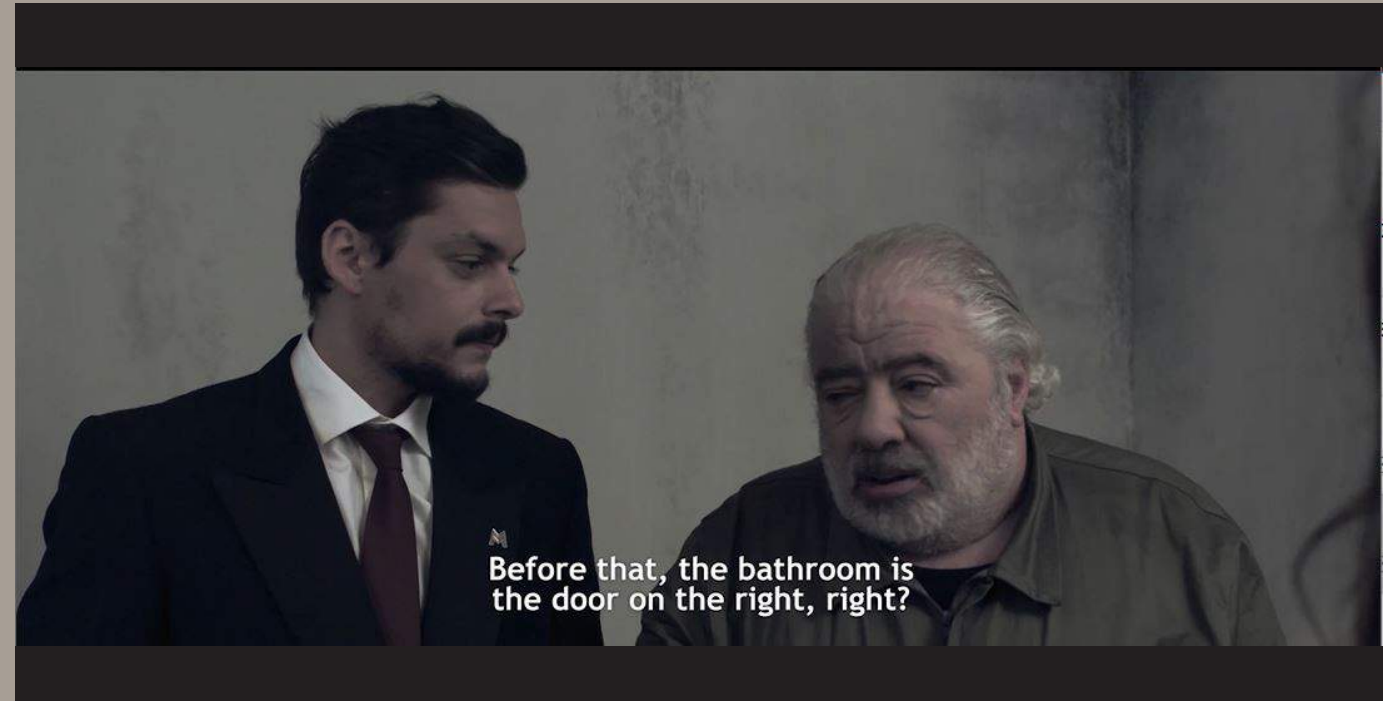
#1 The wall was bright yellow so I toned it down with 2 layers of different shades of grey: a darker, with thick consistency, and then a lighter, and more diluted, in order to create the illusion of humidity.



#2 After outlining the shape of the mold spot, I mixed shades of grey, green and yellow to create the palette to hand paint fungus humidity. ON THE LEFT DOWN: The actors on set and the finished look.



#3 With the same color wheel as the mold spot, I stenciled the 2 walls and the edges of the window. Then, I dripped a very diluted light grey that created the a wet effect. DOWN: A close up of mold and dripping.



MOLD&DRIPPING

Most of my work occurred during pre-production, painting the walls and preparing the living room where the majority of the action would take place. Both the production designer and the director agreed that the house would have a big role to play in order to convey a powerful message of fear, so it was treated just like a character. At the same time, and mimicking the main character's arc, the house can transmit a message of subversion and resistance. **This short won more than 20 prizes including 2 Portuguese Film Academy SOPHIA Awards.**

THE NOTEBOOK OF MR MORAIS (SHORT-MOVIE)

A dark comedy meets a mob thriller that develops in a series of sketches exploring one day in the life of Bruno Morais - an attorney, counsellor and 'cleaner' who works for the mob.

In a struggle against time, Bruno tries to keep his scheduling which includes: blackmailing a city mayor and silencing a witness. However, several setbacks get in Mr Morais' way.

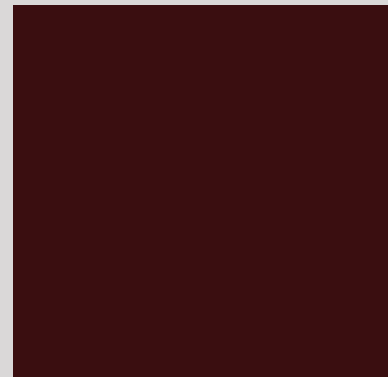
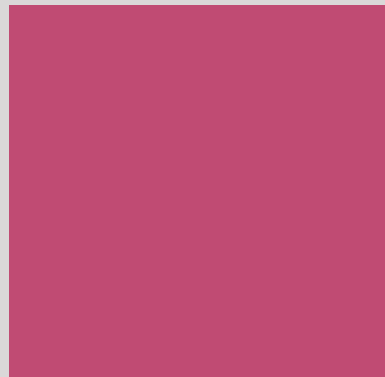
TASKS:
PRODUCTION DESIGN |
ART DIRECTION

MOOD & LIGHT



Bringing my palettes to life requires a great deal of effort and communication between the DOP and me. The work of the cinematographer speak volumes in terms of colour control and alteration. I enjoy creating the mood together and explore how we can enrich the story by helping the characters convey their message before they even open their mouths.

I always like to have the DOP's intake when doing location scouting and prepping the set. Specially this last one. So much can be achieved with the insertion of lighting and practicals.





The D.O.P., the Director and I agreed on a pink look. Hard and vibrant colours such as fuchsias, fluorescent oranges and red-dish pinks were my picks. To counter balance the warm tones, we added a blue light to create purple shadows.



BTS: creating the Motel room

Our set photographer documented the process through out pre-production and shooting where, on this set, I transformed a studio apartment into a cheesy motel room. On the RIGHT page, in the middle section, there is a before and after of this set. Here, a fat greasy mob-related man would pay for a girl, consume drugs and play the Russian roulette. Her blood drips from the teeth of the puma statue, on TOP, symbolizing her character's arc. I coordinated, with the A.D., the mise-en-scène of the blood poodle and splattering on the floor.



Blog: <http://thenotebookofmistermorais.blogspot.pt/?view=magazine>
Facebook: <https://www.facebook.com/thenotebookofmr-morais>
TRAILER: <https://www.youtube.com/watch?v=EX-kQU-ZWZWI>



UP LEFT Junkie girl with dirty hair and black eye | UP RIGHT Oily, dirty and sick looking Junkie with deep dark eye circles
DOWN LEFT Junkie's arm and needle infections | DOWN RIGHT Sexy call girl in a Motel scenery ends up dead

Pics by Erge Jôgela at <https://www.facebook.com/FotograafErge/>

- STRANGE CONNECTION -

Directed by: Maria Ana Marques

A mysterious young woman intrigues her psychiatrist when she reveals that she has been keeping contact with aliens.

ACTORS: UP Luis Lourenço | DOWN Sara Butler

site: <http://cinemapt.wix.com/estranha-ligacao>

facebook: <https://www.facebook.com/estranhaligacao-short>

TASKS:
CHARACTER DESIGN | P.A.





- Douro -

Directed by: Joana Alves

A man finds himself trapped between
a midlife crisis and dark mystic events.

ACTOR: Paulo Calatré

TASKS:
CHARACTER DESIGN

BEAUTY

PHOTOSHOOT ART DIRECTION | PRODUCTION



MAKE ME CINDERELLA

Make Me Cinderella is a Clothing Boutique. Don't get me wrong. This is not just a store, but a brand, built around trend and style.

Every customer is a princess.

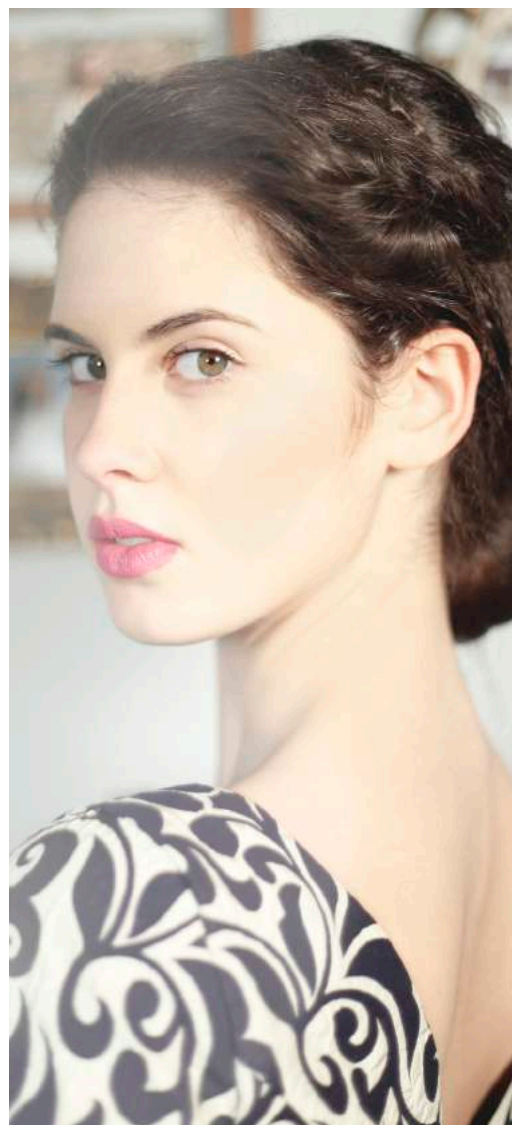
In partnership with photographer MadrePérola, we created this fashion editorial to promote the 2016' Spring and Summer collection available in store.

Some of the amazing brands we worked with: FRNCH, Darling, Coquelicot, Scripta, Littlemistress...

I found myself having a lot of fun while producing this photoshoot. The looks are clean and chic, with a pop of colour here and there.

TASKS
PRODUCTION | ART DIRECTION

A FAIRY TALE PHOTO SHOOT



LEFT Model: Patrícia Correia
UP/RIGHT: Model: Daniela Cruz
Styling: MakeMeCinderella
Production: Andreia Ribeiro
Photography: MadrePérola



MAG STYLING

PHOTOSHOOT ART DIRECTION | PRODUCTION





H O M E T E X T I L E D E S I G N

TASKS:
ART DIRECTION | FOOD STYLING

My second partnership with the talented photographer MadrePérola where we have put together a catalogue of home and dining room table decor.



Earth toned singles perfect for a relaxing breakfast

Fresh citrus are an excellent choice to start the day



ANDY
PORTFOLIO
2019

Porto | Portugal
+351 927 321 783
andything.artdirection@gmail.com